



Quality Without Compromise



  
Magnum Roof Clads<sup>TM</sup>  
We've Got You Covered



We've Got You Covered



## Magnum Roof Clads | New Roofing Trend

**W**hen it comes to Roofing we are on a Roll, by bringing the Colors of Europe Home. This evolutionary new Alu-Zn Stone coated Roof Clads is a fifth generation roof tile, that guarantees an Everlasting durability.

Magnum Roof Clads offers a leading edge that is Thinner, Stronger, Lighter, Durable and exceptionally attractive than the traditional roof tiles offering real cost and fitting benefits.

### Features:

- Weatherproof, Even Sustainable in Marine Environment
- Earthquake Resistant
- Light Weight Roofing
- UV Protection
- Sound Proof
- Fire Resistant (Tested up to 200°C)
- Wind Resistant

We Guarantee 50 Years International Warranty\*

\*Terms & Conditions applied

### History about Stone Coated Roof Tiles

Stone coated metal roofing was refined during and after World War II in the United Kingdom, when the government requested materials that would protect corrugated steel roofs from the harsh climate. A coating of bitumen and subsequent covering by sand, stone or other materials proved effective at protecting the metal roofs and serving as camouflage against potential attack.

In 1954, L.J. Fisher, an industrialist from New Zealand, secured the rights to produce stone-coated metal roofing outside of Great Britain. The company he founded, AHI Roofing, operates the largest metal roofing factory in the world, and has continued to make changes to the metal roofing product.

When compared to asphalt shingles and concrete roofing products, which can weigh 350 to 1100 pounds per square, the stone coated metal roof, at only 150 pounds per square, effectively reduces the overhead weight on the house structure. This provides for a much safer building during an earthquake, fire or a hurricane.

## What are the Properties of Magnum Roof Clads | Stone Coated Roof Tiles?

**Efficient,** One panel is wide yet light weight. Therefore it can save the costs of additional structural support, transportation, workmanship and installation. The large area can be installed in a very short period of time. It also provides a perfect water-proof function with the least input of the products.

**Easy Installation & Handling,** the roof panel can be cut, bent and shaped to meet the most demanding roof design from as low as a 12-degree pitch to a 90-degree angle pitch. It is a scientific roof system, work easy in any buildings, especially conducting safe work of a steep slope roof or tall building roof.

**Varieties of Colors & Design,** magnum roof clads have a great selection of colors to choose from which will suit each and every customer's color preference. And its distinctive design will meet any kind of architectural structures beautifully. The colors and design blend in perfect harmony to give a natural and dazzling look to your roof.

**Durability,** magnum roof clads are bound to withstand any kind of severe weather such as hot, cold, strong wind & heavy rain etc.

**Re-Roofing,** magnum roof clads can replace a roof panel in a matter of days because it is designed to be easily installed over an existing roof, and they can save considerable amount of cost, installation and time.

### Specifications

Magnum Roof Clads roofing Panels contains numerous Protective Layers which serves as Protection & Adhesion for the roof.



### Base Steel

The panels are structural grade steel, with a minimum tensile strength of 37ksi. They are rigid enough to tolerate reasonable loads, while allowing profile designs without the risks of cracking or elastic recovery.

### Alu-Zn Coating

Protection for the rigid steel material is achieved when the steel passes through a hot bath of molten Aluminium-Zinc alloy. This coating combines the protection and strength of both Aluminium and zinc. A Significant property of Zinc component is its ability to protect exposed areas such as cut edges, drilled

holes and scratches. Developers of Aluminium Zinc alloy steel have captured exposure data indicating corrosion protection of the underlying steel for more than 50 Years in most environments.

### **Acrylic Priming System & Base Coat**

An acrylic coating is applied to both sides of the panel immediately after the application of aluminium-zinc coating. This Priming system provide a uniform substrate that enhances the adhesion of subsequent coatings.

The base-coat is formed by applying a custom designed acrylic resin binder. This specifically formulated paint coating is made in two colors that will blend with the various stone granule colors.

The base-coat serves two functions:

- It serves as an adhesion that bonds the stone granules to the base steel.
- It protects the underlying material from water and UV light.

The base-coat's adhesion process is found in its excellent ability to adhere to both the granules and the underlying acrylic priming system. We achieve optimum UV resistance with the use of a pure acrylic resin; the strongest polymer capable of being made into a water based paint.

### **Ceramic Coated Stone Granules**

A protective coating as well as an attractive layer provided by stone granules. They further enhance the resistance to UV light while providing an array of colors. These ceramic coated granules are sized and applied in such a way to ensure maximum coverage of the base-coat; therefore, allowing another layer of protection against water erosion.

### **Acrylic Over glaze**

An acrylic over glaze is applied as a final coating that gives the granules a semi-gloss appearance. This tough thin acrylic finish bonds to the granules and encapsulates them with a coating that enhances the panel's resistance to physical damage.



## Single Color



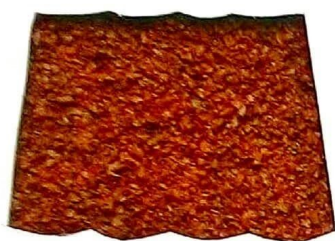
MRC206 / Orange



MRC1102 / Rose Madder



MRC301 / Iron Oxide Red



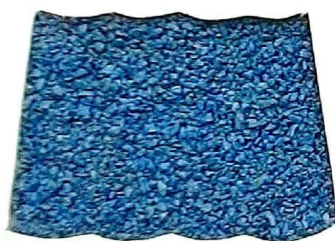
MRC1103 / Agate Red



MRC302 / Emerald Green



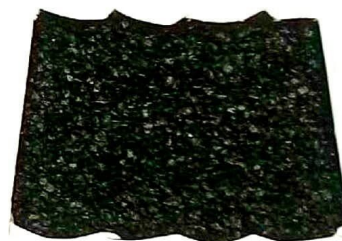
MRC1104 / Coral Red



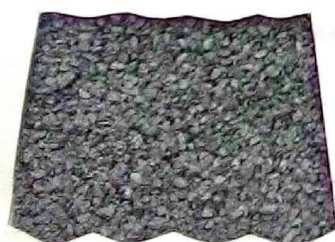
MRC304 / Wathet Blue



MRC1106 / Straw Yellow



MRC305 / Black



MRC1107 / Moon Blue



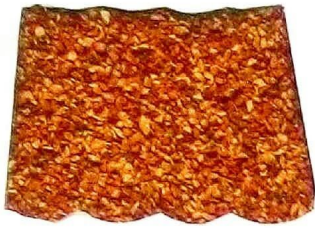
MRC307 / Grey



MRC1120 / Peacock Green



## Multiple Colors



MRC201 / Beige Red



MRC1105 / Henna



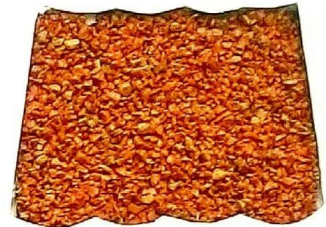
MRC202 / Brown



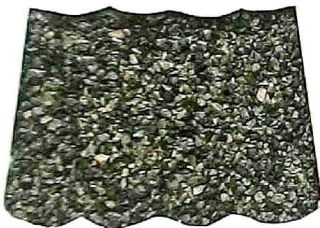
MRC1109 / Auburn



MRC203 / Dark Green



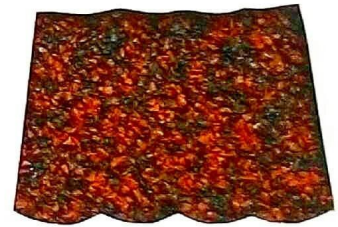
MRC1110 / Melon Yellow



MRC204 / Grey White



MRC1111 / Clay Brown



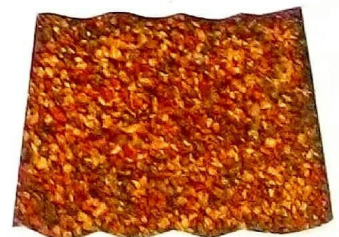
MRC205 / Brick Red



MRC1121 / Sandal Brown



MRC303 / Sapphire



MRC1122 / Chestnut Red

# Types



NOPAD TILE



CLASSICAL TILE (SEVEN WAVE)



CLASSICAL TILE (SIX WAVE)



ROMAN TILE



NOSEN TILE



WOOD TILE



FLAT TILE



NUOU TILE



ASPIRANT TILE



PVDF TILE



MODERN TILE





## FAQs

Q: Are metal roofs noisy?

A: No, the stone coated steel design deadens the sound of the rain and even hail unlike a non-stone coated metal roof.

Q: Is a metal roof hotter in the summer and colder in the winter?

A: No, many customers report a reduction in energy costs during summer and winter months. Also, a MRC can be installed over an existing roof, providing additional insulation from temperature extremes.

Q: Is a metal roof dangerous in weather with lightning?

A: No, metal roofing is both an electrical conductor, and a noncombustible material.

Q: Can I walk on my MRC roof?

A: Absolutely, MRC are made of steel and designed to withstand the weight of people walking on them.

Q: Is a MRC Roofing System more expensive?

A MRC roof offers more value for your money. With a minimum 50 year life expectancy, you would have to purchase and install 2-1/2 shingle roofs for the cost of one MRC roof. Like most products you buy, "you get what you pay for." A MRC roof offers more for your money. It is no bargain to put two roofs on your house because the first one was "cheaper" and subsequently failed. A MRC roof can last a lifetime. MRC is also quite durable because the aluminum-zinc alloy coated steel enhances the superior weathering and corrosion resistance of each roofing panel.

Q: Is a MRC Roofing System warranted?

A: The best in the industry. MRC Roofing Systems carry a Limited Lifetime Warranty including 120 mph winds, hail penetration for any size hail and manufacturing defects - including excessive granule loss. In addition, material and labor are covered for the first 20 years after that time, material is covered the remaining warranty period.

Q: Is water run-off from a metal roof potable?

A: Yes, the water run-off from our products meets the World Health Organization Standards testing. However, rainwater is variable across regions; atmospheric conditions should be considered in actual use. Water collected during the first or second rain fall after extended dry periods can be contaminated by dirt accumulation.

Q: Do you use a non-oiled granule?

A: We use only 3M granules and they do have a small amount of mineral oil on them. However, the miniscule amount does not interfere with the adhesion of our basecoat, and does not affect water run-off.

Q: Does granule size matter in the longevity of the product?

A: Deterioration of the coating takes place when there is exposed, uncovered basecoat; granule size- smaller or larger- does not ensure better coverage.

Q: Is a metal roof only for commercial buildings?

A: No, MRC's product profiles and attractive ceramic stone granules do not resemble the standing seam roofs of the commercial industry; they add value and curb appeal to any roofing installation.





## **m Group**

Door No. 17/361(1) | VP Peter Road | Maradu  
Ernakulam  
Cochin - 682304

Contact : +91 88 93 80 5455 | +91 95 44 72 3614 |  
+91 81 29 71 1666

Email : [info.mgroups@gmail.com](mailto:info.mgroups@gmail.com)

